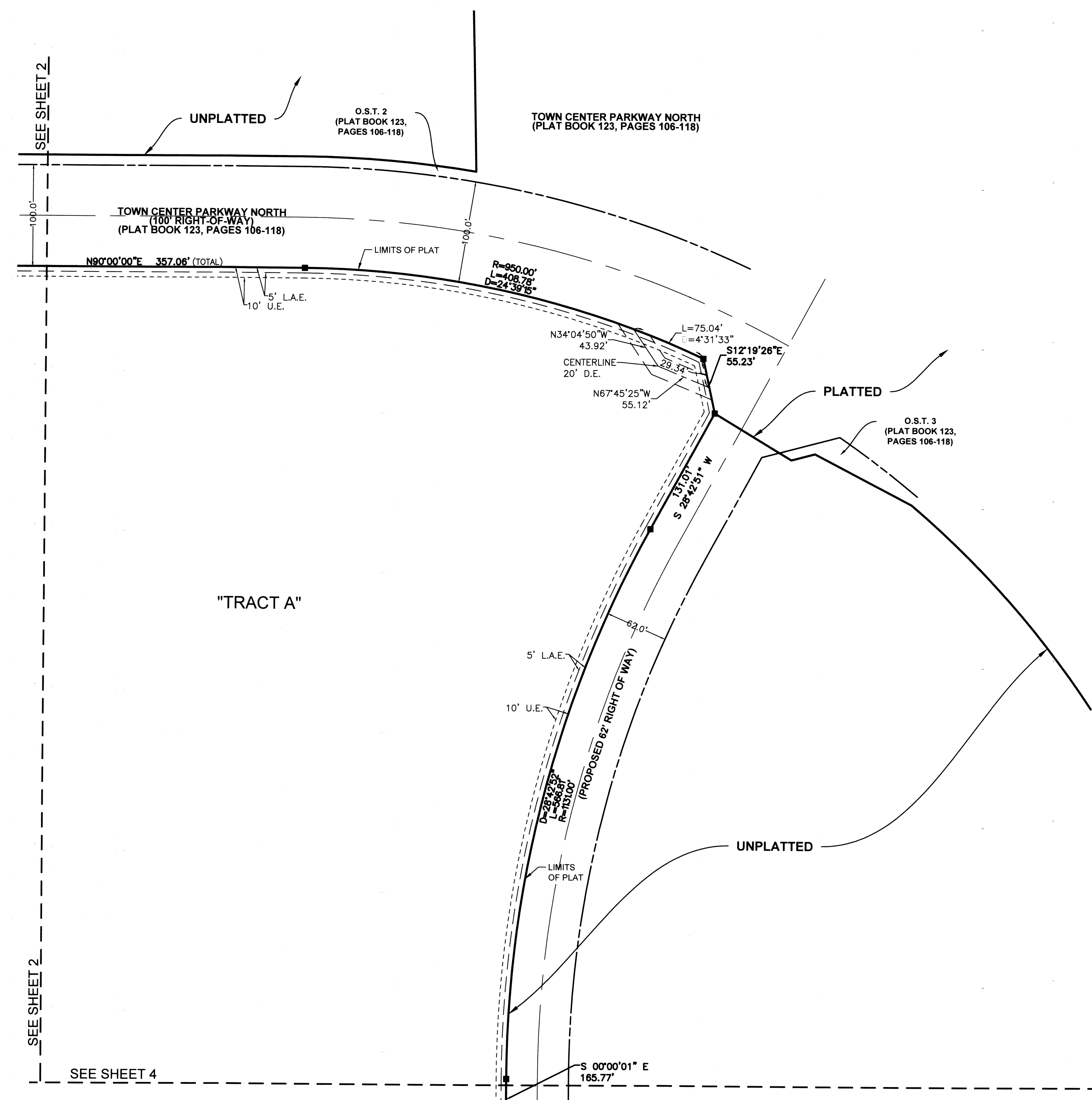
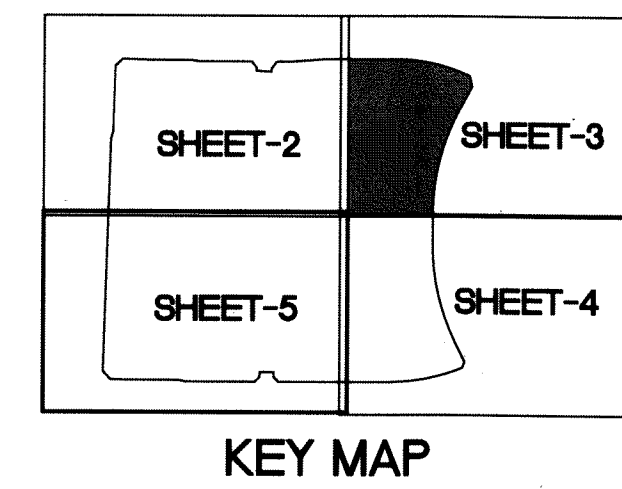


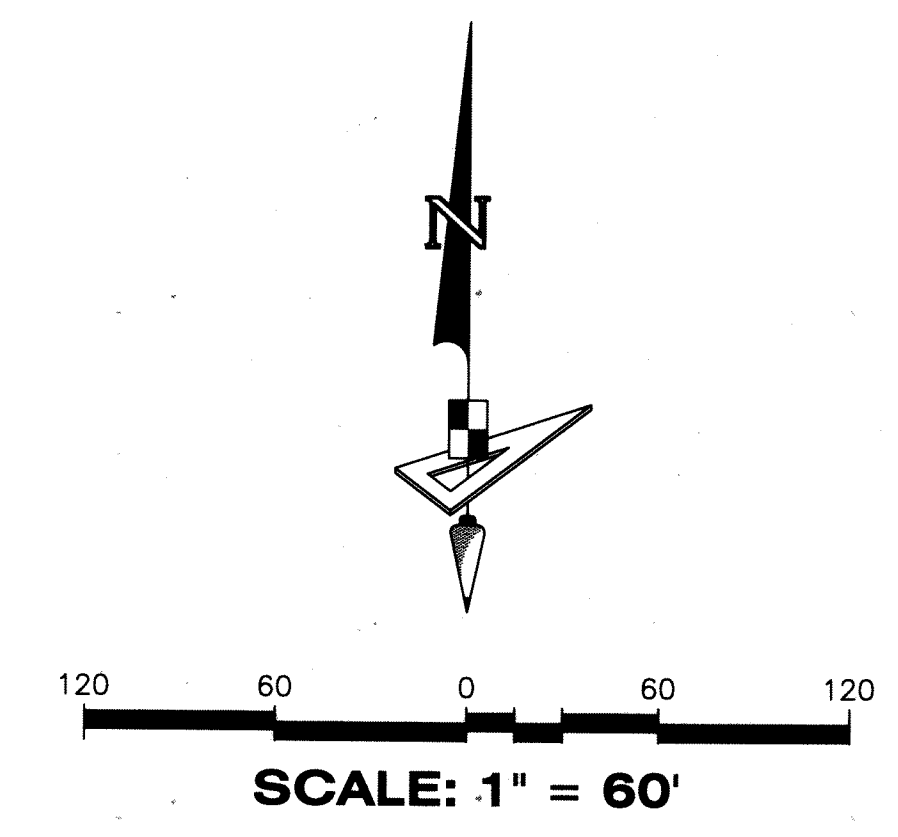
# TOWN CENTER EAST

BEING A PLAT OF A PORTION OF  
SECTION 1, TOWNSHIP 43 SOUTH, RANGE 40 EAST,  
CITY OF WESTLAKE, FLORIDA

48



- LEGEND
- P.B.C. ----- PALM BEACH COUNTY
  - P.B. ----- PLAT BOOK
  - O.R.B. ----- OFFICIAL RECORDS BOOK
  - PG ----- PAGE
  - L.A.E. ----- LIMITED ACCESS EASEMENT
  - U.E. ----- UTILITY EASEMENT
  - R ----- RADIUS
  - L ----- ARCH LENGTH
  - D ----- DELTA ANGLE
  - R.P.B. ----- ROAD PLAT BOOK
  - D.B. ----- DEED BOOK
  - D.E. ----- DRAINAGE EASEMENT
  - R/W ----- RIGHT OF WAY
  - L.M.E. ----- LAKE MAINTENANCE EASEMENT



BEARINGS SHOWN HEREON ARE BASED ON THE NORTH LINE OF SECTION 6, TOWNSHIP 43 SOUTH, RANGE 41 EAST, HAVING A GRID BEARING OF S.89°48'53"E., AS DETERMINED BY GEOPPOINT SURVEYING, INC. USING GLOBAL POSITIONING SYSTEMS (GPS) AND LENGEMANN NETWORK. BEARINGS SHOWN HEREON, REFER TO THE STATE PLANE COORDINATE SYSTEM, NORTH AMERICAN DATUM OF 1983 (NAD 83 - 07) FOR THE EAST ZONE OF FLORIDA. SAID BASIS OF BEARING IS THE SAME IN THE NORTH AMERICAN DATUM OF 1983 (NAD 83 - 90).

COORDINATES SHOWN HEREON ARE FLORIDA STATE PLANE GRID DATUM = NAD83 - 2007 ADJUSTMENT  
 ZONE = FLORIDA EAST  
 LINEAR UNITS = US SURVEY FEET  
 COORDINATE SYSTEM = 1983 STATE PLANE  
 PROJECTION = TRANSVERSE MERCATOR  
 ALL DISTANCES ARE GROUND  
 SCALE FACTOR: 1.0000  
 GROUND DISTANCE X SCALE FACTOR = GRID DISTANCE  
 PLAT BEARING = GRID BEARING  
 NO ROTATION  
 ALL TIES TO SECTION CORNERS AND QUARTER CORNERS ARE GENERATED FROM MEASURED VALUES

NOTICE: THIS PLAT, AS RECORDED IN ITS GRAPHIC FORM, IS THE OFFICIAL DEPICTION OF THE SUBDIVIDED LANDS DESCRIBED HEREIN AND WILL IN NO CIRCUMSTANCES BE SUPPLANTED IN AUTHORITY BY ANY OTHER GRAPHIC OR DIGITAL FORM OF THE PLAT. THERE MAY BE ADDITIONAL RESTRICTIONS THAT ARE NOT RECORDED ON THIS PLAT THAT MAY BE FOUND IN THE PUBLIC RECORDS OF THIS COUNTY.

SEE SHEET 2

SEE SHEET 2

SEE SHEET 4

SEE SHEET 4